

---

## California Underground Facilities Safe Excavation Board ("Dig Safe Board")

February 12, 2019

### Agenda Item No. 10 (Information Item) – Staff Report

Discussion on Area of Continual Excavation Ticket Renewal Requirement (Government Code section 4216.10(e))

---

#### ***Presenter***

Jon Goergen, GIS Specialist

#### ***Background***

The Dig Safe Act of 2016 tasked the California Underground Facilities Safe Excavation Board (the "Dig Safe Board") with developing a regulatory process, in consultation with the regional notification centers, to allow for a modified or eliminated ACE renewal ticket process in situations involving areas of continual excavation ("ACE") where no subsurface installations are (Gov. Code section 4216.10, subd. (e)).

Using data on a subset of "high priority" lines (petroleum pipelines and natural gas transmission pipelines), the locations of farming activities estimated from the National Land Use Dataset (NLCD, 2011), and parcel data for California, staff conducted an analysis to determine parcels containing farmland and parcels containing petroleum and/or gas transmission pipelines. Statewide, an approximately 550,000 parcels contain farmland out of almost 12,700,000 parcels statewide. Of the 550,000 parcels containing farmland, about 25,000 parcels **contain** petroleum and/or natural gas transmission pipelines. This leaves an estimated 525,000 farmland parcels **do not contain** buried petroleum pipelines or gas transmission pipelines. Of those 525,000 farmland parcels without gas transmission of oil pipelines, many are expected to contain some other type of infrastructure, further reducing the number of potential farmland parcels without buried infrastructure to a thus far unknown amount. A table breaking down the data at the county level is attached.

Staff is looking for input from farmers, utility operators, and regional call centers on their experience and concerns with respect to the ACE renewal ticket process. To help initiate a discussion on a "modified or eliminated" ACE renewal ticket process with respect to agriculture and flood control operators a simplified diagram is attached titled "Draft ACE Renewal Ticket Process".

Some issues to consider:

- How do we retain data related to this process from year to year?
- Can we use technology to identify areas in which no buried infrastructure is present?
- Are there any security concerns in the process of identifying farmland parcels that do not have buried infrastructure?

***Objective of this workshop:***

- Identify areas of concern related to the modified or eliminated ACE renewal ticket requirements

***Attachment(s):***

Title: Estimated\_Impacted\_Parcel ACE.pdf

Description: A county by county breakdown of total parcels, number of parcels with farmland, and the number of parcels with farmland and petroleum pipelines or natural gas transmission pipelines.

Title: ACE Renewal Ticket Flow Diagram DRAFT.pdf

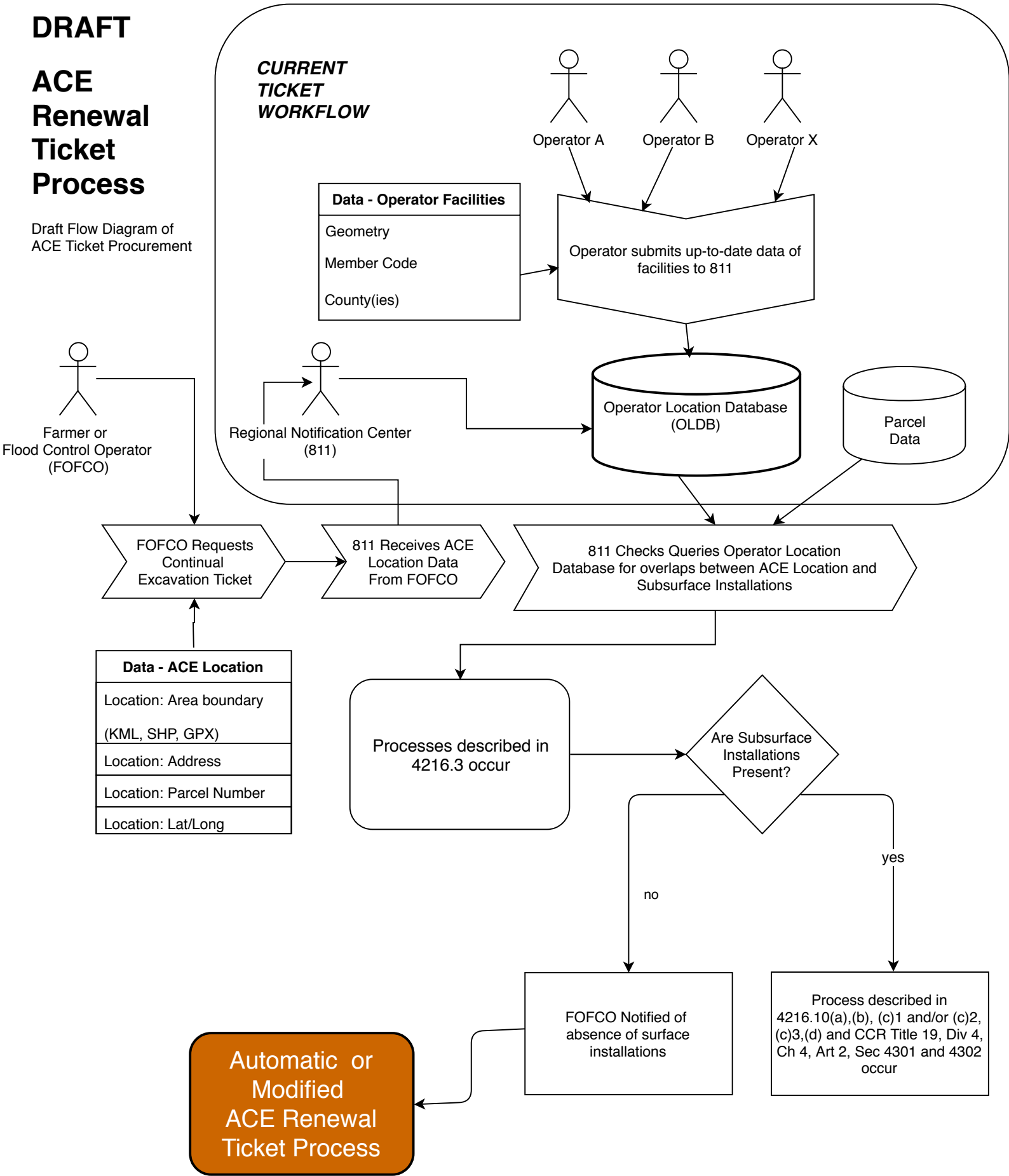
Description: Diagram showing simplified version of excavation ticket process with draft processes related to Government Code section 4216.10(e), the modified or eliminated renewal ticket process for areas of continuous excavation without any surface installations.

County Name	Total Parcels	Parcels with farmland	Farmland Parcels without Oil or Gas Transmission Pipelines	Farmland Parcels with Oil or Gas Transmission Pipelines
Alameda	458,691	719	581	138
Alpine	2,373	21	21	0
Amador	24,191	321	297	24
Butte	100,759	11,157	10,546	611
Calaveras	43,644	142	141	1
Colusa	14,842	6,965	6,123	842
Contra Costa	377,086	8,234	7,881	353
Del Norte	17,081	876	876	0
El Dorado	135,422	75	75	0
Fresno	304,330	57,736	55,566	2,170
Glenn	15,021	6,570	5,894	676
Humboldt	73,453	4,258	3,978	280
Imperial	87,798	11,403	11,003	400
Inyo	16,095	1,213	1,213	0
Kern	412,787	42,443	38,756	3,687
Kings	49,185	17,368	16,864	504
Lake	65,560	1,524	1,524	0
Lassen	33,686	3,968	3,857	111
Los Angeles	2,421,965	17,530	17,448	82
Madera	60,668	12,244	11,824	420
Marin	96,163	87	83	4
Mariposa	14,621	5	5	0
Mendocino	62,069	3,866	3,693	173
Merced	87,374	25,824	25,128	696
Modoc	33,161	4,897	4,627	270
Mono	20,821	436	436	0
Monterey	122,858	6,814	6,282	532
Napa	50,440	4,732	4,439	293
Nevada	63,628	11	11	0
Orange	925,734	4,152	4,125	27
Placer	178,878	4,979	4,829	150
Plumas	29,289	646	646	0
Riverside	1,033,483	44,252	42,854	1,398
Sacramento	463,861	14,225	13,739	486
San Benito	20,551	3,038	2,705	333
San Bernardino	849,624	8,991	8,763	228
San Diego	1,067,686	21,666	20,811	855
San Francisco	219,889	0	0	0
San Joaquin	223,172	36,539	34,846	1,693
San Luis Obispo	144,051	8,502	8,053	449
San Mateo	223,778	1,684	1,661	23
Santa Barbara	131,317	6,921	6,577	344
Santa Clara	523,639	5,130	4,941	189
Santa Cruz	99,243	1,500	1,424	76
Shasta	97,161	9,560	9,084	476
Sierra	5,072	114	114	0
Siskiyou	53,878	6,807	6,807	0
Solano	144,575	6,510	5,758	752
Sonoma	190,935	9,016	8,552	464
Stanislaus	165,875	22,878	21,944	934
Sutter	34,943	9,906	9,225	681
Tehama	43,838	9,845	9,348	497
Trinity	16,250	28	19	9
Tulare	157,706	44,560	44,149	411
Tuolumne	55,833	106	106	0
Ventura	265,746	8,769	7,896	873
Yolo	64,656	9,453	8,675	778
Yuba	32,545	4,613	4,215	398
<b>Totals:</b>	<b>12,696,435</b>	<b>551,216</b>	<b>526,823</b>	<b>24,393</b>

DRAFT

# ACE Renewal Ticket Process

Draft Flow Diagram of  
ACE Ticket Procurement



**DRAFT - Automatic or Modified  
ACE Renewal Ticket Process**

